



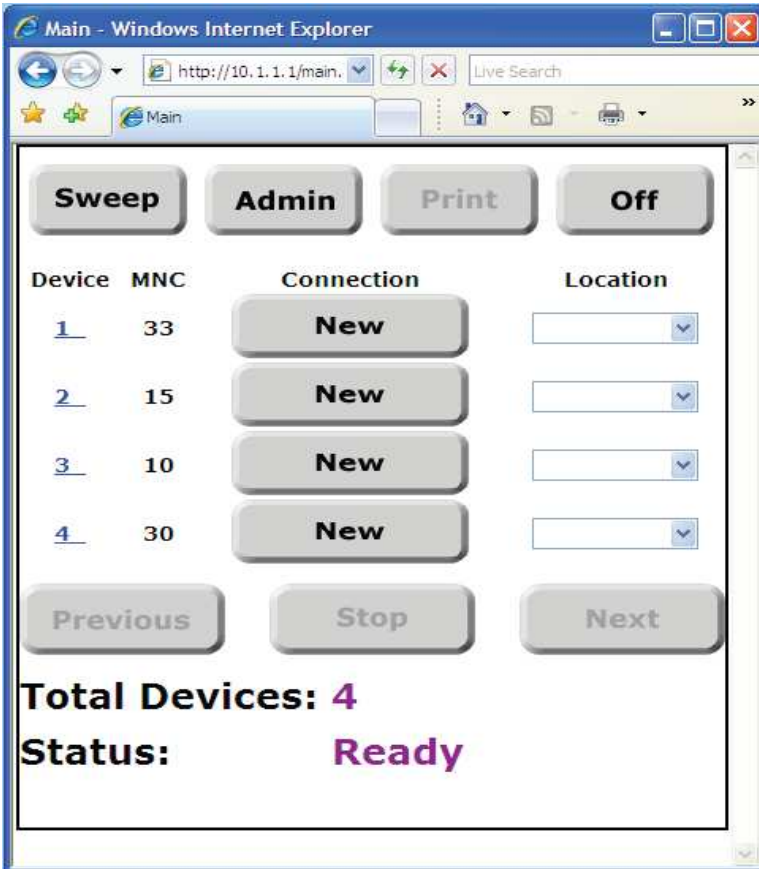
Searchlight GSM/UMTS detection and location system

GSM eavesdropping & tracking devices pose a threat to security !



Key features

- Easy to use
- Quick and detailed results
- Automated detection and analysis processes
- Locate and eliminate mode
- Threat analysis tool
- Comprehensive and regularly updated database



Introduction

GSM based eavesdropping and tracking devices have become by far the most common technical attack used by both commercial & government level espionage agents.

These GSM Bugging devices are available in many different hides as standard and can be purchased from the internet by anyone for as little as £ 25.00 !

They can have sound, motion & vibration activation capability & can be configured to automatically SMS the suspect or call the suspect opening up an audio channel for them to listen to the room or vehicle in question from anywhere in the world !

At QCC Interscan we pride ourselves in being world leaders in TSCM sweep service provision and in the detection of eavesdropping attacks so when the threat of GSM eavesdropping appeared we started working on a method to Detect, Locate and Counter it.

Our result is **SearchLight** !

SearchLight is the only reliable system available globally for the short range detection & Location of GSM and UMTS devices !

Please ask us about the many uses for **SearchLight** & how it can assist you.

SearchLight is designed & built entirely in the United Kingdom.



Searchlight GSM/UMTS detection and location system

GSM eavesdropping & tracking devices pose a threat to security !



Deployment

SearchLight is powered by a 120v –240V power supply and has a 12V input allowing it to be used in vehicles.

SearchLight also has a hold-up battery which allows the unit to be unplugged and moved from room to room without the need to power SearchLight down.

SearchLight may be deployed in a stand alone mode or in cooperative modes with other equipment or systems. Some of these deployment modes are described below.

Secure Room Systems

Users of permanent RF monitoring systems will benefit from SearchLight. These systems provide permanent and perpetual monitoring of a room or area using concealed countermeasure receivers and sensors.

These systems are locally or remotely operated and produce warning alerts when threats are detected. SearchLight adds an exceptionally cost effective capability to integrate into permanent eavesdropping detection systems.

It covers the most frequently encountered threats. Threats are constantly changing for example body worn GSM bugs may be brought into meetings. These can be detected and the operator can choose to deny service or take other appropriate action to eliminate the threat.

System overview

The system uses active, patented techniques to find any GSM and UMTS devices in the areas to be swept.

When devices are found the SearchLight operator can quickly distinguish between legitimate or authorised mobile phones and GSM bugging devices. Automated processes, network surveying, system set up and range selection, device detection and results analysis make the system effective & efficient.

SearchLight's database determines the threat level of a suspect device and is updated on a monthly basis to ensure the very latest threat information is available.

When a device is demonstrated to be hostile it can either be activated for precise location and removal or the SearchLight operator can decide to allow or deny it service at will.

White lists of mobiles can be compiled so that the system does not flag the operators mobile or other legitimate or authorised mobiles as possible hostile devices.

SearchLight is exceptionally easy to use and does not require the operator to have technical skills beyond the SearchLight training Course.

SearchLight's sweep activities and results are logged for comprehensive report generation and SearchLight can be configured to sweep networks in different Countries.

User benefits

- Easy integration into permanent RF systems
- A cost effective perpetual countermeasure
- Cost effective remote management



GSM eavesdropping & tracking devices pose a threat to security !

SearchLight ...powered by SearchBase™

Customer: 2011
 Location:

Date: Time:
 Job start time: Job end time:

SearchLight status: **Ready**

IMEI	IMSI	Brand	Model	Test ph type	Test ph group	Colour key	Sweep 1	Sweep 2	Sweep 3	Sweep 4	Sweep 5	Sweep 6	Sweep 7
56260014986840	234159077991097	Nokia Corporation	N73-1	3G	1	Green							
12540000573390	23410003506946	Apple	iPhone 4 (A1332)	3G	1	Green							
91997044900600	234159085547981	Nokia Corporation	1661-2,1661	2G	2	Green							
92722049630990	234331307281817	Nokia Corporation	1661-2,1661	2G	2	Green							
93970449493350	234100033330078	Nokia Corporation	1661-2,1661	2G	2	Green							
92676104426210	234159071910679	Nokia Corporation	1661-2,1661	2G	2	Green							
12030002706210	234159026074675	Apple	iPhone 3GS - A1303	3G	2	Green							
112422008296870	234159087742076	Apple	iPhone 4 (A1332)	3G	2	Green							
94879017886890	234159089801191	Research In Motion	8100	2G	3	Green							
98054037947150	234308374296582	Samsung Korea	GT-E1120	2G	3	Green							
94005029421400	234103943610701	Research In Motion	8310	2G	3	Green							
95094206587000	234331306982289	Nokia Corporation	Nokia 6210i	2G	3	Green							
11472002064840	505013467619538	Apple	iPhone A1203	2G	4	Green							
98054038088820	234308374296550	Samsung Korea	GT-E1120	2G	4	Green							
951110207795820	2341032230718346	Nokia Corporation	6310i	2G	4	Green							
12345678901234	234332106706066	M any	Universal mains bloc			Red							
35790246811220	23415907619531	X bug	X bug (keyring)			Red							
000011501130230	234339800885719	-	Open Bug			Red							
95021004552270	234309024271296	Siemens AG	Cellular Engine MC55			Red							

Professional TSCM teams

Well equipped and highly skilled TSCM teams provide the best countermeasure to the threat of eavesdropping, effectively countering even the highest level threats. Their sweeps should include thorough physical inspection of the environment and technical counter measures for each possible type of threat. This is a time consuming and costly process and also one which often has to be frequently repeated.

SearchLight provides a cost effective method to speed up comprehensive sweeps for the most rapidly emerging GSM based eavesdropping devices. GSM devices have replaced traditional RF device types as the most common threat and this trend will only increase as GSM technology and bandwidths improve.

Searchlight is the only reliable system globally which can detect and locate GSM and UMTS based eavesdropping devices.

Searchlight will enable professional TSCM teams to detect hostile devices and will reduce the time required to reliably locate and eliminate them.

Security personnel / VIP protection

Security officers are responsible for the continuous safeguard of information after the TSCM professionals have completed their job.

SearchLight can be operated as a stand alone solution to provide continuous protection for principles from the most prevalent threats. Security personnel can quickly become confident and effective users. The system can be permanently located in a secure office or can be used to sequentially sweep offices to provide protection of the whole site.

SearchLight can also be used very effectively to prevent VIP tracking by GPS/GSM vehicle trackers. Location and elimination of trackers is simple and efficient.

User benefits

- Pervasive and perpetual sweeping
- Cost effective coverage of larger premises
- Training packages available
- Simple and effective vehicle sweeps

User benefits

- Works along side existing TSCM equipment
- Comprehensive and current database
- Simple integration in to reports

SearchLight provides the effective solution



Technical information

Uses:

SearchLight can be used to detect and locate all GSM/UMTS devices including the following kinds; Eavesdropping devices, PDA's, Mobile Phones, IED Detonation Triggers, Tracking devices, Audio and Video Codec's, Modems and Alarms.

SearchLight can be used to search People, Buildings, Vehicles, Aircraft, Watercraft and Rural and Urban Environments for GSM/UMTS devices.

Frequency bands:

The system can be supplied to cover up to two GSM bands.
All standard GSM bands are available (850, 900, 1800, 1900MHz).
UMTS bands covered include 2,100Mhz, 850Mhz and 700Mhz.

Range:

Dependant on GSM activity the range is currently between 3 Metres to 50 Metres. The range is set and adjusted by the user.

Antennas:

Omni-directional on-board antennas

Power:

12V DC Input: 4 Pin XLR Connector
Supplied with 120v-240V mains adaptor

Physical:

Dimensions: 431 x 300 x 132mm
Weight: 10kg approx
Operating temperature: 0°C to +40°C

Contact us

Address

QCC Interscan Ltd
Buchanan House
24-30 Holborn
London
EC1N 2LX
United Kingdom

Phone +44 (0) 207 205 2100

Email SearchLight@qccglobal.com

Web www.qccglobal.com

*Note: This product is for use by UK Government and Government approved Agencies.
Export is subject to UK licence controls and SearchLight must be used in
accordance with local or National Laws.*

Commercial in Confidence